





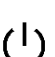


# GPS QUICK START GUIDE

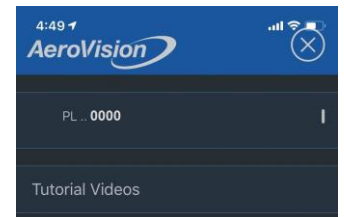


“I have become a better falconer because of the judgments I can make with the Marshall GPS. It is truly amazing” – Steve Chindgren


Congratulations on your Marshall GPS purchase. You will find it is far more than simply just a better recovery tool. Customers tell us it has far improved their falconry in fundamental ways, unimaginable just a few years ago. We hope you find it will become an indispensable tool in your hawking kit.

## HERE IS HOW TO GET STARTED WITH YOUR NEW GPS SYSTEM:

-  Download “AeroVision4” from the App Store on your Apple device.
-  Be sure your Bluetooth is ON, on your Apple device.
-  Open AeroVision by tapping its icon on your screen.
-  Enable location services. After the walk through, you will see a map of your area with a red dot (Apple device’s GPS Location\*) in the center.
-  Turn on your PocketLink (data receiver) by tapping the Power icon with your magnetic wand.
-  In AeroVision tap the Marshall icon at the upper left corner to open AV Settings menu. *You will see the S/N for your PocketLink at the top of the Settings menu. Tap this number to connect your PocketLink.*
-  While outside with a clear view of the sky, install the battery into your RT GPS. The LED will blink Green, Green (bootup) then Orange (Searching for Satellite) and will turn blue within 2-3 minutes once GPS is acquired.



## YOUR GPS TRANSMITTER IS CONNECTED TO YOUR SYSTEM AND READY TO USE!

-  Important “Tutorial Videos” are located near the top of the settings menu. Watch these videos to become familiar with your Marshall GPS  
*The Tutorial Videos are short and arranged by topic but contain the fundamental operational knowledge you’ll find valuable now and in the future. They can be watched repeatedly to pick up new things as your experience grows and new questions come up. That’s why they are right there in the App. They are in your hands at all times, not on a DVD at home. To view the videos online, you can access them at [www.marshallradio.com](http://www.marshallradio.com)*

*Note for Leg Mount Users: All transmitters come with a tail spring. To remove, untwist antenna protector. There is a blue washer holding the spring. Pull spring and washer downwards, wiggle back and forth till it breaks free. After removing spring, re-install washer and antenna protector.*



*Save the spring to easily convert your transmitter for Tail/TrackPack use in the future!*

Tap to access settings menu.

Watch Tutorial Videos

View Flight Log

Adjust System Settings

Tap to enlarge directional arrow and distance. Great for tracking to the bird.

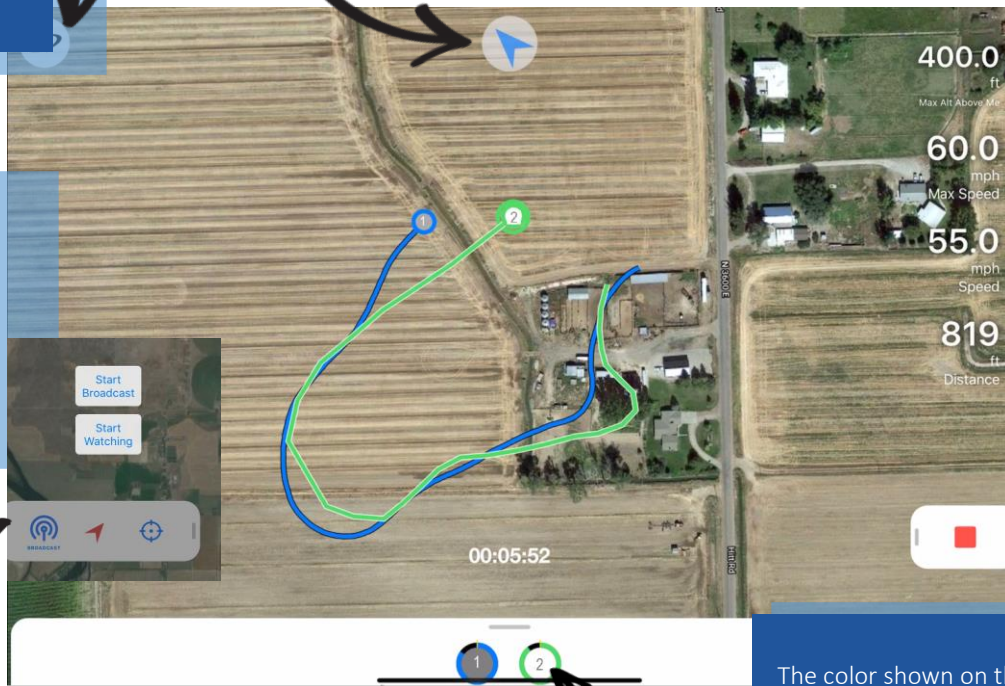
Tap to select Live Statistics  
Up to 2 on smaller phones,  
4 on larger phones and iPads.

Swipe Right to access broadcast, adjust map orientation and set target lock.

Swipe Left to record a flight.

Swipe up to view transmitter statistics.

The color shown on the flight indicates which mode you are in. In the flight above Green is ECO and Blue is HD. Press and hold the circle of the transmitter to change the mode.



Feel free to call us with questions (801) 936-9000 | 845 West Center Street, North Salt Lake, Utah 84054 | [www.marshallradio.com](http://www.marshallradio.com)



**Compatible Devices:** iPad Air\* and newer, iPad Mini Gen 2\* and newer, iPhone 6 and newer.

Latest devices provide the most responsive experience, especially when tracking multiple transmitters.

*\*Note: AeroVision only works on iPads that are cellular enabled (as the GPS chip that is bundled in the cellular enabled models is required for AeroVision to know your location). A cellular data connection is not required, an internet connection is only needed when downloading maps (which can easily be done in advance)*



**Social Media:** users will want to join the "AeroVision GPS Support Group" on Facebook where you can find ongoing help and technical support. You will get answer to questions directly from the company as well as fellow users with experience. This is a closed group and you will be asked to provide your serial numbers to join.